



28 July 2023

# **Innovative technologies for a sustainable future**

Sarah Adams

Gallagher Animal Management



The survivors in farming  
will be the ones who  
adopt technology fastest

---



Technology:

**The enabler of INNOVATION  
to solve a customer problem**

# Incremental innovation

## The problem.

Common issues with load bar cables include:



**Chewed by pests**

Rats and other pests often cause destruction by chewing on anything and everything available.



**Damaged in gates**

Livestock yards and handlers include a lot of moving parts, cables can get caught or create tripping hazards.



**Water damage**

Weighing yards are often exposed to the elements - water, mud, dust.



**Damaged by stock**

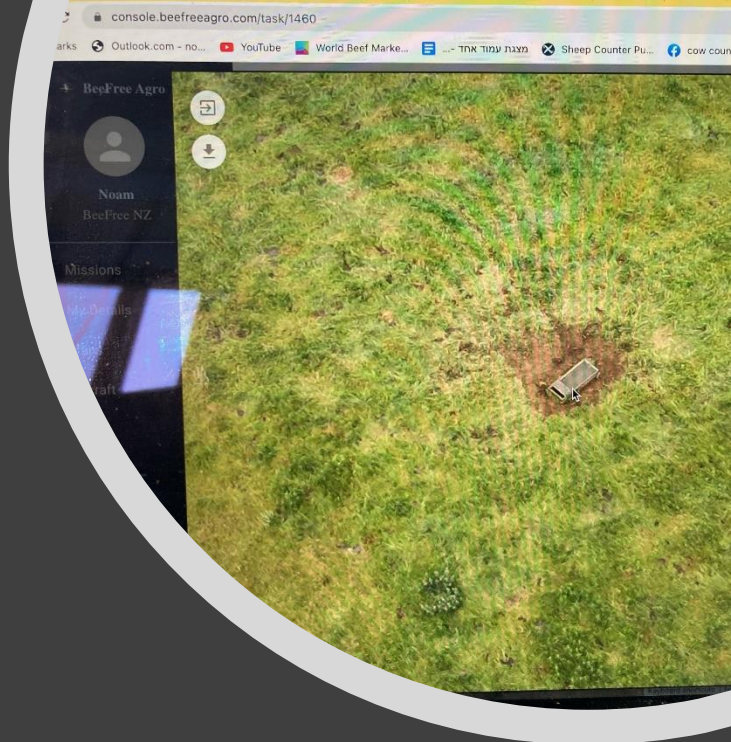
With some livestock weighing over 900kg, a stomp on a load bar cable can be very costly.

# The wireless weigh



# The future is hands-free, real time data collection





# Drones



# Wearables



# How are wearables delivering for the livestock producer?

Many data  
points, some  
insights

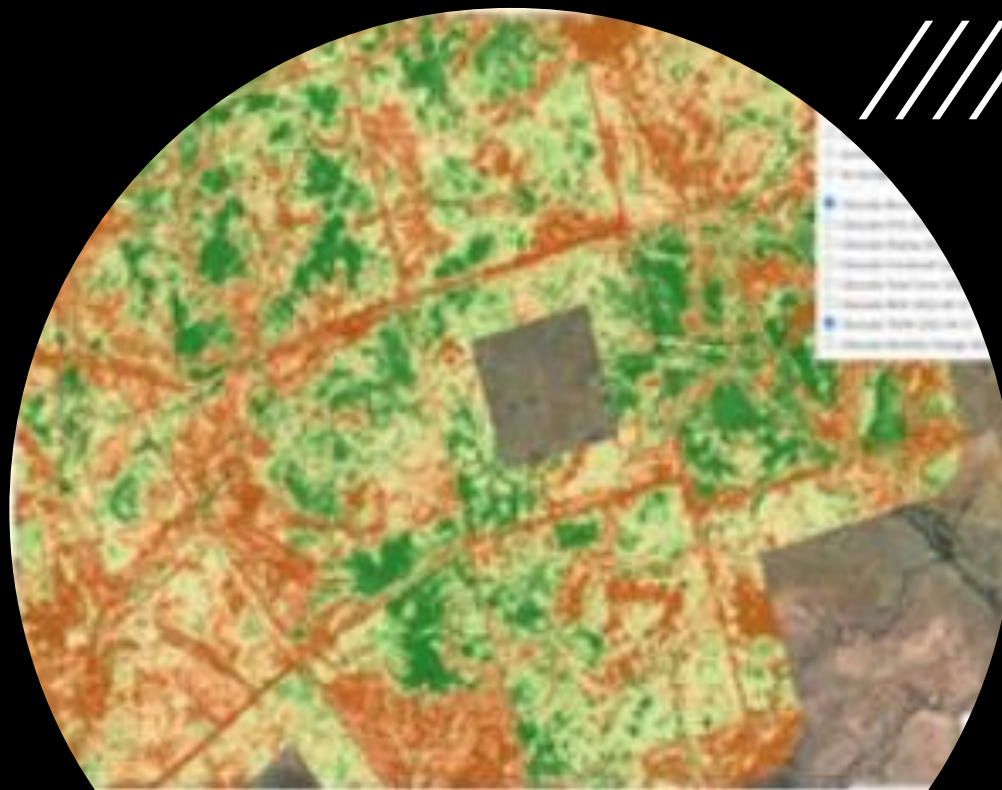
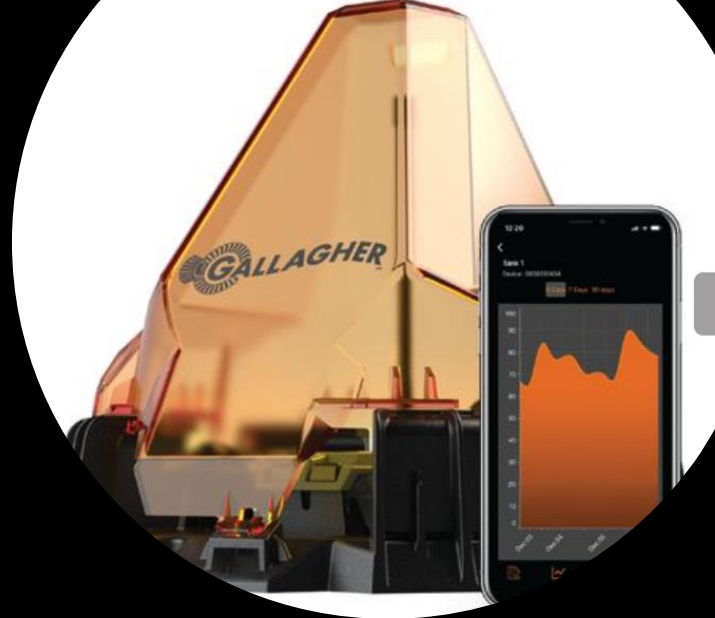
Value in dairy  
clear but not  
for sheep/beef

Communications  
an issue for  
remote locations

**This will change over the next 2-3 years**

Connectivity

# Cellular/ Satellite



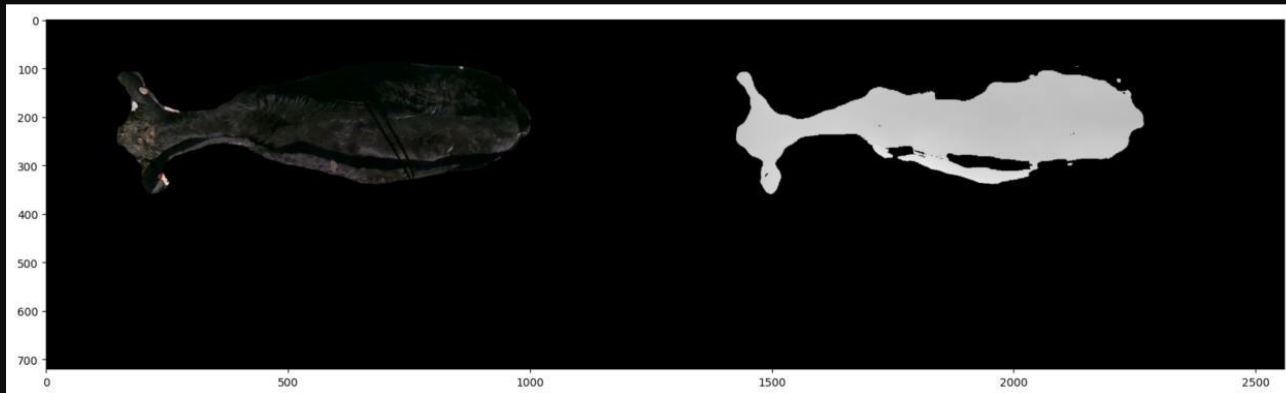
## Virtual fencing wearables

Imagine a world  
where you could put  
fences anywhere and  
move and monitor  
animals, at any time  
from your device



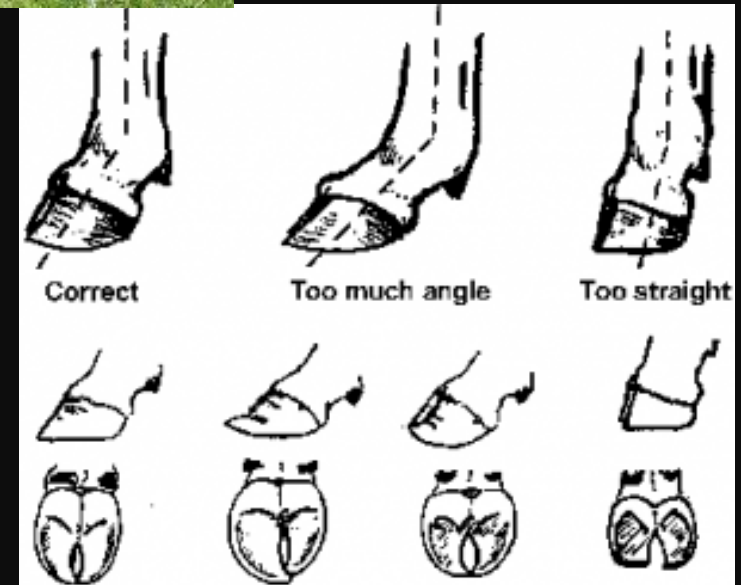
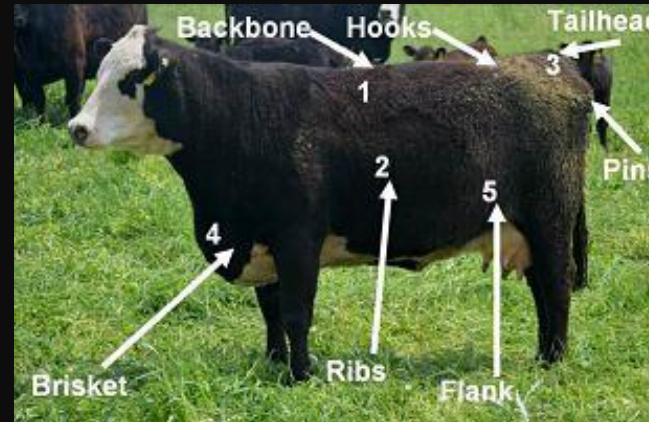


# Remote data collection by camera and hardware



# Body condition score and structural assessment

- Generate a model from expert opinion
- Removes some subjectivity
- Reduces time and labour
- Enables it to be done by camera rather than humans



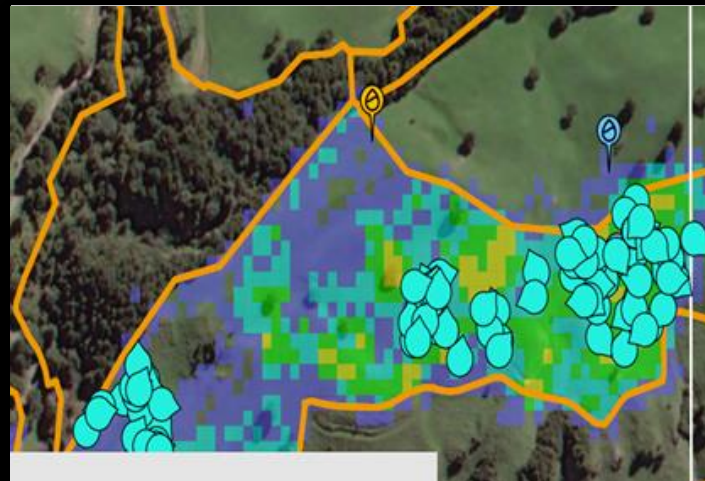
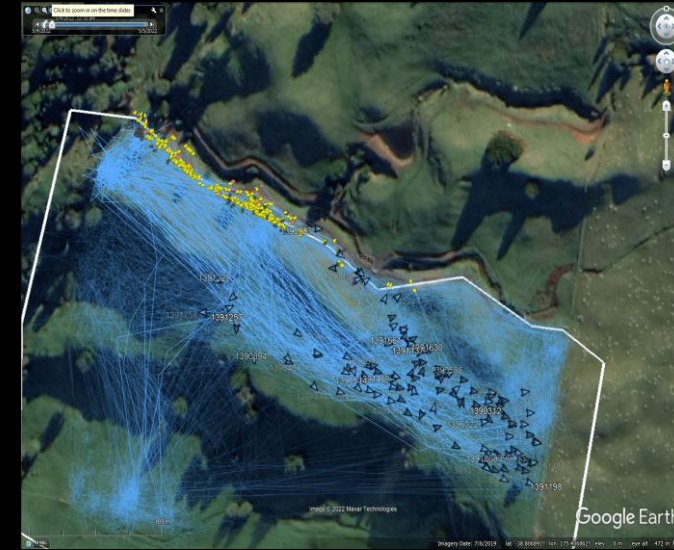
Combining technologies

# Feed efficiency on pasture



## Understanding and enhancing biodiversity

- Understanding the impacts of grazing & implementing best practice
- Understand what paddocks/areas of the farm are performing and which are not
- Make data driven decisions on best land use



# Top three take home messages

---

1. Ensure technology is solving a pain or generating a gain for a job to be done on farm.
2. Choose technology partners carefully.
3. Challenge yourself to embrace change and embark on a learning journey.



# **Innovative technologies for a sustainable future**

Sarah Adams

Gallagher Animal Management

Contact: [sarah.adams@gallagher.com](mailto:sarah.adams@gallagher.com)

+6421728060